

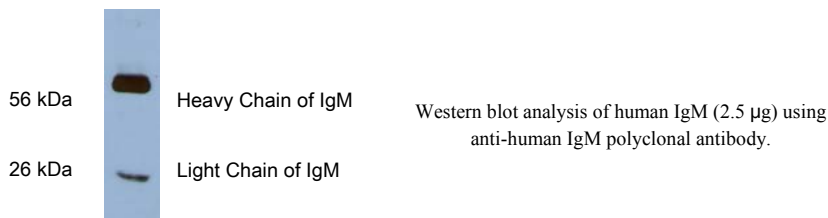


ANOGEN - A Division of YES Biotech Laboratories Ltd.
2355 Derry Road East, Unit 23, Mississauga, ON L5S 1V6 • Tel: (905) 677-9221 • Fax: (905) 677-0023

Rabbit anti-Human IgM Polyclonal Antibody Datasheet

Catalogue No	AI80005
Product name	Purified rabbit anti-human IgM polyclonal antibody
Product type	Primary antibodies
Description	Rabbit anti-human IgM polyclonal antibody, affinity purified.
Target protein	Human IgM
Immunogen	Human IgM
Specificity	This antibody mainly recognizes human IgM heavy chain.
Reactivity	Human, others not tested
Clonality	Polyclonal
Source	Rabbit
Formulation	Liquid, in 0.01M PBS, pH7.2 containing 0.01% BSA, 0.05% sodium azide and 50% glycerol
Applications	Suggested application and working condition: Western blot: 1:40,000
Storage	Store in aliquots at -20°C. Avoid repeated freeze/thaw cycles
Research	Biochemistry.
References	If research is published using this product, please inform Anogen in order to cite the reference on this datasheet. Anogen will provide any product of choice as gratitude.

Western blot:



This product is for LABORATORY RESEARCH USE and further manufacture only, and can not be administrated to human and animals for use in diagnostic and therapeutic procedures.

Manufactured by ANOGEN - A Division of YES Biotech Laboratories Limited