



**ANOGEN** - A Division of YES Biotech Laboratories Ltd.

2355 Derry Road East, Unit 23, Mississauga, ON L5S 1V6 • Tel: (905) 677-9221 • Fax: (905) 677-0023

### Rabbit anti-Human FPRL1 Polyclonal Antibody-a Datasheet

<b>Catalogue No</b>	AI70001A
<b>Product name</b>	Purified rabbit anti-human Human formyl peptide-receptor-like-1 (FPRL1) polyclonal antibody
<b>Product type</b>	Primary antibodies
<b>Description</b>	Rabbit anti-human FPRL-1 polyclonal antibody, purified with a Protein G affinity column
<b>Target protein</b>	FPRL-1
<b>Immunogen</b>	synthetic peptide corresponding to residues of 2nd extracellular loop of human FPRL1, KLH conjugated
<b>Specificity</b>	This antibody recognizes human FPRL-1
<b>Reactivity</b>	Human, others not tested
<b>Clonality</b>	Polyclonal
<b>Source</b>	Rabbit
<b>Formulation</b>	Lyophilized in 0.01M PBS ; pH=7.2   Reconstitute with double distilled H <sub>2</sub> O to final Conc. Of 1 mg/ml before use.
<b>Applications</b>	Suggested application and working condition: Western blotting, dilute to 1:4000 to 1:5000 ; Immunofluorescence: 1:400 to 1:500 Flow cytometry: 1:100. Using HL-60 as positive control. Please refer to the enclosed data and Experimental Fig 1, 2, and 3
<b>Storage</b>	Store in aliquots at -20°C. Avoid repeated freeze/thaw cycles
<b>Research</b>	Cellular signaling regulation and Alzheimers Disease.
<b>References</b>	If research is published using this product, please inform Anogen in order to cite the reference on this datasheet. Anogen will provide any product of choice as gratitude.

**This product is for LABORATORY RESEARCH USE and further manufacture only, and can not be administrated to human and animals for use in diagnostic and therapeutic procedures.**

**Manufactured by ANOGEN - A Division of YES Biotech Laboratories Limited**

**S7.5(02)**



**ANOGEN** - A Division of YES Biotech Laboratories Ltd.

2355 Derry Road East, Unit 23, Mississauga, ON L5S 1V6 • Tel: (905) 677-9221 • Fax: (905) 677-0023

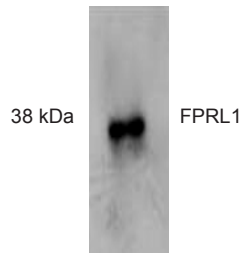


Fig.1 Western blot analysis of extracts from HL-60 cells using anti- FPRL1 antibody.

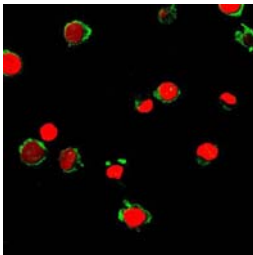


Fig.2 Immunofluorescent analysis of HL-60 cells using anti-FPRL1 antibody (green). Nucleus have been labeled with PI (red).

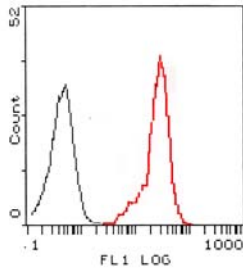


Fig.3 Flow cytometric analysis of HL-60 cells using FPRL1 using anti- FPRL1 polyclonal antibody (red) compared to a nonspecific negative control antibody (black).

**This product is for LABORATORY RESEARCH USE and further manufacture only, and can not be administrated to human and animals for use in diagnostic and therapeutic procedures.**

**Manufactured by ANOGEN - A Division of YES Biotech Laboratories Limited**

**S7.5(02)**