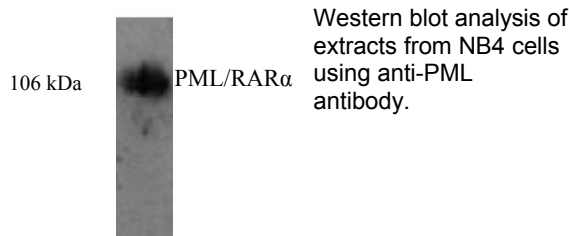




**ANOGEN** - A Division of YES Biotech Laboratories Ltd.  
2355 Derry Road East, Unit 23, Mississauga, ON L5S 1V6 • Tel: (905) 677-9221 • Fax: (905) 677-0023

### Rabbit anti-Human PML Polyclonal Antibody-b Datasheet

<b>Catalogue No</b>	AI70002B
<b>Product name</b>	Purified rabbit anti-human Promyelocytic Leukemia Gene product (PML) polyclonal antibody
<b>Product type</b>	Primary antibodies
<b>Description</b>	Rabbit anti- Promyelocytic Leukemia Gene product (PML), against B-BOX 1 domain, Affinity purified.
<b>Target protein</b>	PML
<b>Immunogen</b>	PML partial recombinant protein with His-tag.
<b>Specificity</b>	This antibody recognizes human PML
<b>Reactivity</b>	Human, others not tested
<b>Clonality</b>	Polyclonal
<b>Source</b>	Rabbit
<b>Formulation</b>	Liquid
<b>Applications</b>	Suggested application and working condition. Western blot: 1:2000. Using NB4 cell and HL-60 cell as positive control. Please refer to enclosed Fig /Picture
<b>Storage</b>	Store in aliquots at -20°C. Avoid repeated freeze/thaw cycles
<b>Research</b>	Cell biology and Molecular biology.
<b>References</b>	If research is published using this product, please inform Anogen in order to cite the reference on this datasheet. Anogen will provide any product of choice as gratitude.



**This product is for LABORATORY RESEARCH USE and further manufacture only, and can not be administrated to human and animals for use in diagnostic and therapeutic procedures.**

**Manufactured by ANOGEN - A Division of YES Biotech Laboratories Limited**