



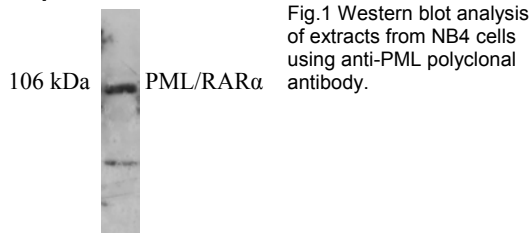
**ANOGEN** - A Division of YES Biotech Laboratories Ltd.

2355 Derry Road East, Unit 23, Mississauga, ON L5S 1V6 • Tel: (905) 677-9221 • Fax: (905) 677-0023

### Rabbit anti-Human PML (Ring Finger) Polyclonal Antibody Datasheet

<b>Catalogue No</b>	AI70002A
<b>Product name</b>	Purified rabbit anti-human PML (Ring Finger) polyclonal antibody
<b>Product type</b>	Primary antibody
<b>Description</b>	Rabbit anti-human promyelocytic leukemia protein (PML) ring finger antibody, affinity purified.
<b>Target protein</b>	The ring finger in the homodimerization domain of human PML protein. The ring finger, like B box1, is retained in PML/RAR $\alpha$ chimera.
<b>Immunogen</b>	Recombinant partial human PML
<b>Specificity</b>	This antibody recognizes normal PML proteins of lower molecular weight, and also recognizes the high molecular weight PML/RAR $\alpha$ chimeric protein in promyelocytic leukemia patients.
<b>Reactivity</b>	Human, others not tested
<b>Clonality</b>	Polyclonal
<b>Source</b>	Rabbit
<b>Formulation</b>	Lyophilized in pH 7.4, 0.01M PBS. To reconstitute, add appropriate volume of dH <sub>2</sub> O to reach a final antibody concentration of 1mg/ml.
<b>Applications</b>	Western blotting: dilute approx. 1: 5,000 to use. Immunofluorescence: dilute approx 1:500 to use. Immunochemistry: dilute approx 1:100 to use.
<b>Storage</b>	Store in aliquots at -20°C. Avoid repeated freeze/thaw cycles
<b>Research</b>	Life science research.
<b>References</b>	If research is published using this product, please inform Anogen in order to cite the reference on this datasheet. Anogen will provide any product of choice as gratitude.

#### Experimental data



**This product is for LABORATORY RESEARCH USE and further manufacture only, and can not be administrated to human and animals for use in diagnostic and therapeutic procedures.**

**Manufactured by ANOGEN - A Division of YES Biotech Laboratories Limited**



**ANOGEN** - A Division of YES Biotech Laboratories Ltd.

2355 Derry Road East, Unit 23, Mississauga, ON L5S 1V6 • Tel: (905) 677-9221 • Fax: (905) 677-0023

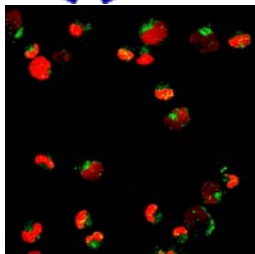


Fig.2 Immunofluorescent staining of NB4 cells using anti-PML polyclonal antibody.

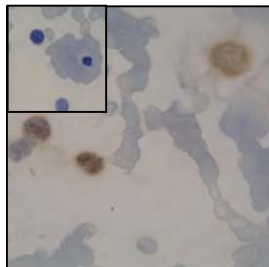


Fig.3 Immunocytochemical staining of HL-60 cell using anti-PML polyclonal antibody.

**This product is for LABORATORY RESEARCH USE and further manufacture only, and can not be administrated to human and animals for use in diagnostic and therapeutic procedures.**

**Manufactured by ANOGEN - A Division of YES Biotech Laboratories Limited**