



ANOGEN - A Division of YES Biotech Laboratories Ltd.

2355 Derry Road East, Unit 23, Mississauga, ON L5S 1V6 • Tel: (905) 677-9221 • Fax: (905) 677-0023

Mouse anti-Human PSMA Monoclonal Antibody [4H11] Datasheet

Catalogue No	MO-T40086C
Product name	Mouse anti-human PSMA monoclonal antibody [4H11]
Clone No	4H11
Product type	Primary antibodies
Description	Mouse monoclonal antibody to human Prostate Specific Membrane Antigen, Protein G affinity purified
Target protein	Human Prostate Specific Membrane Antigen (PSMA)
Immunogen	Crude membrane protein extraction from PSMA expression LNCap cells, and a PSMA derived peptide (ESKVDPСКА) coupled with KLH.
Specificity	This antibody is reactive to PSMA expression LNCap cells and the PSMA peptide in EIA. In IHC staining experiment, this antibody reacts to human prostatic carcinoma tissue, but not to normal prostatic tissue.
Reactivity	Human, others not tested.
Cross-reactivity	Little or no cross-reactivity to normal prostatic tissue.
Clonality	Monoclonal
Source	Mouse
Myeloma	Sp2/0-Ag14
Subclass	IgG1
Light Chain	Kappa
Formulation	Lyophilized from a solution in 0.01M PBS, pH 7.0
Reconstitution	Double distilled water is recommended and to adjust the final concentration to 1.00 mg/ml
Applications	EIA, Immunohistochemistry.
Research	Immunology, cell type, prostate malignant carcinoma marker.
Storage	Store at -20° C
References	If research is published using this product, please inform Anogen in order to cite the reference on this datasheet. Anogen will provide any product of choice as gratitude.

Immunohistochemistry:

In the following figure, PSMA were detected in paraffin-embedded human prostatic tissue and prostatic carcinoma tissue with mAb 4H11 Clone (A: normal prostate tissue, ID 0903027b; B: prostate carcinoma, ID 0906360g; C: prostate carcinoma, ID 0905742a; D: prostate carcinoma, ID 0905779)

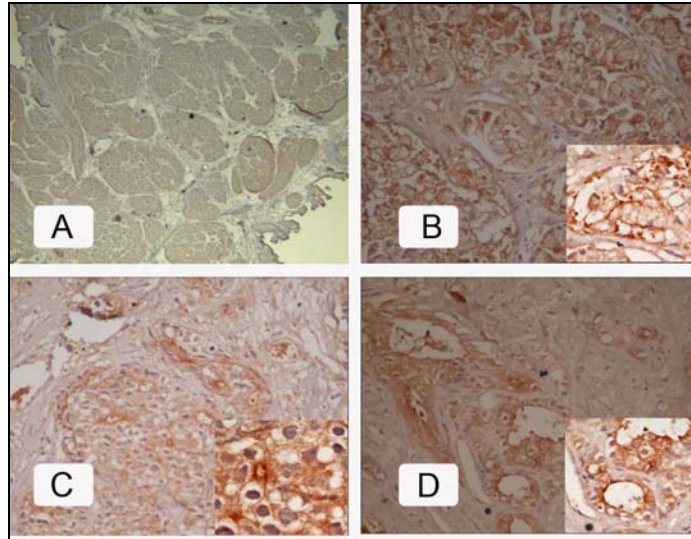
This product is for LABORATORY RESEARCH USE and further manufacture only, and can not be administrated to human and animals for use in diagnostic and therapeutic procedures.

Manufactured by ANOGEN - A Division of YES Biotech Laboratories Limited

S7.5(02)



ANOGEN - A Division of YES Biotech Laboratories Ltd.
2355 Derry Road East, Unit 23, Mississauga, ON L5S 1V6 • Tel: (905) 677-9221 • Fax: (905) 677-0023



This product is for LABORATORY RESEARCH USE and further manufacture only, and can not be administrated to human and animals for use in diagnostic and therapeutic procedures.

Manufactured by ANOGEN - A Division of YES Biotech Laboratories Limited

S7.5(02)